



Central Washington Tour: Take a look at where to tee it up in the area

There is no shortage of quality golf when traveling around the Central Washington area. Places like the Links at Moses Pointe (right) offer terrific courses and plenty of scenic views along the way. There is plenty to see and like. For more on Central Washington, please see our special section inside.



WHAT'S NEW IN NW GOLF

British Columbia team wins 19th annual Lamey Cup

The team from British Columbia Golf won the 19th PPGA Lamey Cup, at historic Victoria (B.C.) Golf Club.

It marks the fourth time Team BC Golf has won this event, which features 10-person teams from the six associations under the PPGA umbrella - Oregon Golf Association, British Columbia Golf, Idaho Golf Association, Montana State Golf Association, Alaska Golf Association, and Washington Golf.

Victoria Golf Club is one of the six founding clubs of the Pacific Northwest Golf Association, which was founded in 1899. The club previously hosted the PPGA Lamey Cup in 2007.

British Columbia Golf, captained by BC Golf President Shauna Wilton, finished with 15.5 points; Team WA Golf was second with 12.5 points; Team OGA third with 12 points; Team IGA fourth with 11.5 points; Team MSGA fifth with 6 points; and Team PPGA sixth with 2.5 points.

BC Golf held a one-point lead over WA Golf after the first day's play, which consisted of Four-Ball and Foursomes matches. In the Singles matches, BC Golf won 7.5 points to hold the lead.

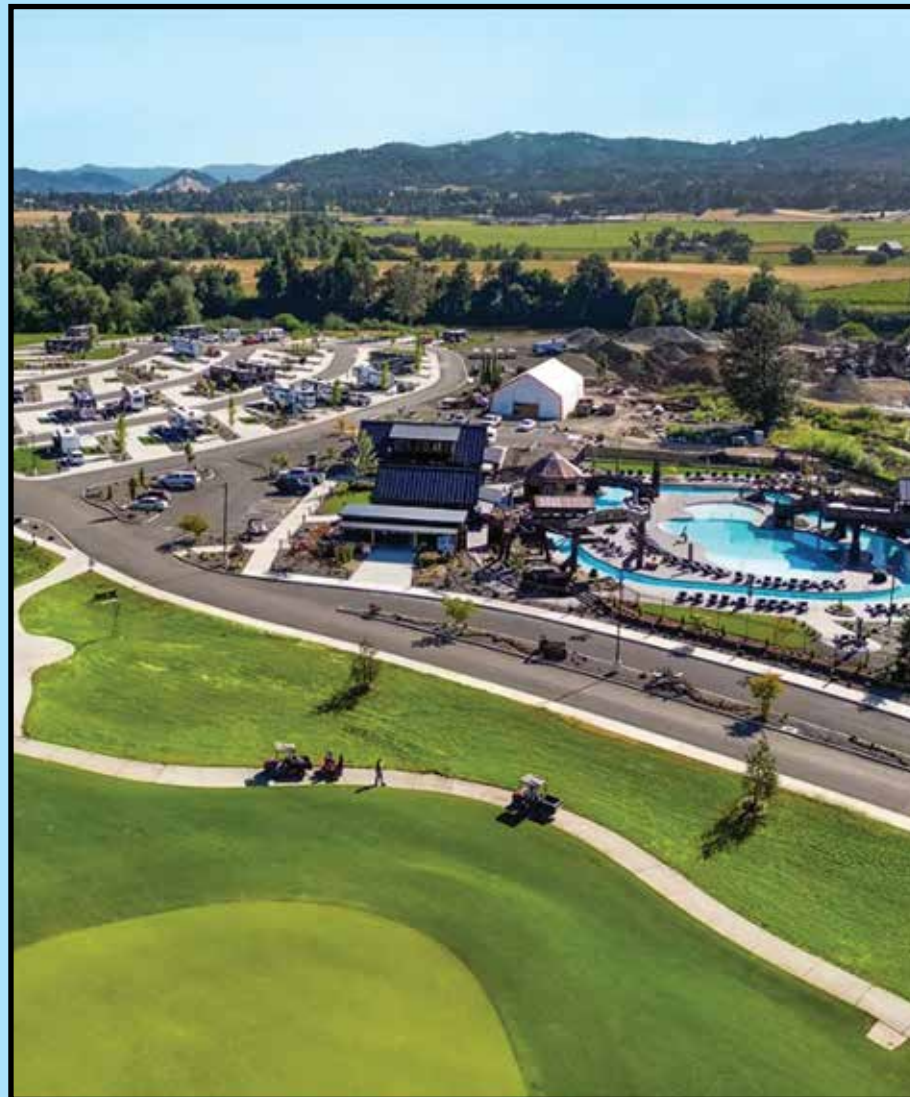
With the recent addition of the Alaska Golf Association and Montana State Golf Association as member associations of the PPGA, the format for the PPGA Lamey Cup was adjusted to accommodate six teams rather than the four teams who competed in previous years.

Rules Question of the month

A player inadvertently tees up a ball forward of the tee markers and makes her stroke to start a hole. After leaving the teeing area a fellow player notices her tee still in the ground forward of the tee markers. Now what? See the answer on Page 2.



Bar Run: Oregon course is worth the trip



Bar Run in Roseburg, Ore. is beyond spectacular with a championship 18-hole golf course an up-scale RV park and cottages next to the golf course. A one-of-a-kind pool experience. Looking for more than golf, this positively is the place to be. See inside for more on Bar Run and what it has to offer.



Gove captures the Washington Open crown with a birdie on first playoff hole

PGA professional Jeff Gove of the Idaho Club had to work overtime to win the 100th Washington Open Invitational at Tacoma Country and Golf Club.

Gove won in a one-hole playoff against Craig Ronne of Emerald Valley Golf Club in Creswell, Ore. Gove birdied the first hole in the playoff.

This was Gove's third trip to the winner's circle at the Washington Open Invitational having previously won this event in 2012 and 1995.

Low amateur of the championship was Henry Mills of West Seattle Golf Club who finished fifth.

Gove put together rounds of 70-79-67 for a 206 total to finish in a tie for first with Ronne who went 67--67-73. Gove made up a six-shot deficit in the final round to force the playoff.

Preston Bebach of Canterwood tied for third with James Hall of the PNW Golf Academy at 207 - one shot out of the playoff. Mille was fifth in the tournament while Dan Campbell of Bellingham Country Club was sixth at 211. Round out the top 10 for the tournament were Jason Aichele of Meadow Springs in Kennewick at seventh and tied for eighth were Rodolfo Caparas of Five Iron Grill, Sabrina Bonano of Sahalee and Tim Feesntra of Broadmoor.



2026 Washington Open champion Jeff Gove.

Boeing Classic returns to Snoqualmie Ridge in August

For more than two decades, the Boeing Classic has brought golf's greatest legends to the Pacific Northwest. This year, the prestigious golf tournament returns to The Club at Snoqualmie Ridge from August 14-16, 2026. Co-founded by Virginia Mason Franciscan Health (VMFH) and the Seattle Seahawks, the tournament stands as the only premier PGA Tour event in the Pacific Northwest. Boeing is the tournament's title sponsor.

Since its inception, the tournament has hosted golf icons, including Fred Couples (pictured right), Bernhard Langer, Ernie Els, and defending champion, Steve Allan. This year, 78 PGA Tour Champions, including Masters champions and Golf Hall of Famers, will compete for a \$2.3 million purse.

Beyond golf, the Boeing Classic offers a fantastic family-friendly weekend with activities for all ages. More than just a golf tournament, the Boeing Classic has raised more than \$12 million to support local charities, including Virginia Mason Franciscan Health and The First Tee of Greater Seattle. Tickets start at just \$20, and kids are free. For more see boeingclassic.com.



Auburn Golf Course gets flooded by Mother Nature but comes back stronger than ever on and off course

Mother Nature hit the Pacific Northwest hard in December. The rains came. They never stopped. Rivers flooded. The Pacific Northwest became national news on a daily basis.

And golf courses in the area also took the brunt from the series of storms which ravaged the area. If you are a golfer December was not a good month to be teeing it up - unless you escaped on an airplane to a drier and warmer destination.

At courses like Auburn, Mother Nature's wrath was felt on and off the course.

On December 9, the nearby Green River flooded and in the span of a couple of hours police officers came to the course and told everyone to evacuate because the river was coming across the road. The course was cleared and everyone in the clubhouse and restaurant went home as the flood waters began to creep onto the golf course.

"By the end of the day there was at least 10 inches of water on the road from the course," said head professional Chris Morris. "The police mentioned that more water was going to be released from the dam and the river was going to rise and we had to get out."

The floodwaters covered the golf course - except for the holes on the hill. But the worst was yet to come.

That night the floodwater crept into the basement of the clubhouse where the fleet of 76 golf cars were being stored. They were a fleet of electric Club Cars and all were plugged in getting charged up. The floodwaters and the electric cars were not a good mix together.

The entire fleet of golf carts were ruined. When Morris and his crew came in to survey the damage, there was three feet of water in the basement and the electric cart fleet was ruined.



Steve Turcotte

"We never had a chance to move the golf carts," said Morris. "It all happened overnight."

These were not old golf carts either. Twenty-four were less than a year old and the rest were all less than three years old. And

Club Car did not want the carts back because of the damage. So Auburn liquidated the carts and then brought in another fleet for the 2026 golf season. The course was closed from Dec. 9 to Feb. 22 and the restaurant was closed from Dec. 9 to March 21.

There was also other damage including hot water tanks, a cooler, satellite irrigation systems and the pumphouse. Even the electrical grid took a hit.

But the course has come back. There was minimal damage to the course from the floods and Morris said that everything is almost back to normal.

"We're still putting it all back together but we're almost there," Morris said.

Steve Turcotte is editor of Inside Golf Newspaper. He can be reached at sdsturcotte@comcast.net.



Auburn Golf Course recovered after having its entire fleet of golf cars become unusable after the floods.



Bob Marlatt
Publisher-Advertising

Steve Turcotte
Editor-Advertising

Kathy Marlatt
Operations Manager

Contributing Writers
Jeff Coston, Patti Daskalos

Photography: Scott Bisch

Cartoonist: Harold Bluestein

Subscription rates:
\$32-one year and \$56-two years
(U.S. funds).

Mailing Address
P.O. Box 1890
Port Townsend, WA 98368

Courier Address
460 Dennis Blvd
Port Townsend, WA 98368

Phone
(360) 379-4080

E-mail Address
insidegolf@cablespeed.com

Website Address
www.insidegolfnewspaper.com

Inside Golf Newspaper is a trademark of Northwest Publications, Inc. and is published on the first of each month.

Double Bogey



Harold Bluestein PGA



Rules Answer

Answer: The player incurs a two stroke penalty. That ball she played from outside the teeing area is not in play and she must correct this error prior to playing from the next hole's teeing area or the final hole of the round. All strokes made before fixing the error do not count including penalty strokes related to the play of that ball. All this applies even when a player plays from the wrong teeing area.

• Inside Golf would like to thank Paul Lucien for his for the rules questions and answers.



INSTRUCTION PROGRAMS

at Interbay GC, Jackson Park GC, & Bill Wright GC

Private Instruction | Group Lessons | Clinics | Junior Programs | Ladies Nights | and MORE!

LEARN MORE AT PREMIERGC.COM



Professional golf tours will hit the Pacific Northwest with tournaments

The LPGA and PGA Tour Champions have set their dates for their return appearances to the Pacific Northwest for their annual tournaments for the 2026 golf season..

Interestingly both are set for the same weekend in August. The LPGA Portland Standard is set for Aug. 13-16 at Columbia Edgewater Country Club while The Boeing Classic will take place Aug. 14-16 at Snoqualmie Ridge Golf Club. The LPGA Portland Standard is the longest-running tournament on the LPGA Tour schedule.

After a historic 75th anniversary season, the LPGA Tour announces the 2026 schedule featuring 33 events and a total prize fund of over \$132 million. The world's best female golfers will once again compete for the largest prize fund in the Tour's history. The upcoming year will notably see the Solheim Cup in the Netherlands as well as new events, new venues and increased purses. In 2026, the LPGA Tour will travel to 13 different countries and regions and 13 states across the United States.

The Pros In The Northwest

- Boeing Classic: PGA Tour Champions set for Aug. 14-16 at Snoqualmie Ridge Golf Club.
- Portland Standard Classic: LPGA event set for Aug. 13-16 at Columbia Edgewater Country Club.

There will be two multi-event swings in Asia – the first in the spring to Thailand, Singapore and the People's Republic of China and the second in the fall to People's Republic of China, the Republic of Korea, Malaysia and Japan. One European swing will take place in the middle of the year, including two major championships and the ISPS Handa Women's Scottish Open, before the LPGA Tour returns to Europe for the Solheim Cup in September.

The Boeing Classic just celebrated its 20th year in 2025 and always features one of the top fields on the PGA Tour Champions schedule.

Tour Players With Northwest ties

PGA Tour

- Wyndham Clark • Ex-Oregon • 31st on the list with \$2,844,686
- Nick Taylor • Ex-UW • 48th on the list with \$1,940,472
- Andrew Putnam • Tacoma • 54th on the list with \$1,704,766
- A.J. Ewart • B.C. Canada • 88th on the list with \$730,398
- Joel Dahmen • Clarkston • 99th on the list with \$653,674
- Joe Highsmith • Tacoma • 138th on the list with \$307,299
- Dylan Wu • Medford, Ore. • 156th on the list with \$175,136
- Adam Svensson • British Columbia • 164th on the list with \$152,490
- Cameron Davis • Australia (Member at Sahalee) • 188th on the list with \$46,856
- Kevin Chappell • Kirkland • No events

Korn Ferry Tour

- Alistair Docherty • Vancouver, Wash. • 3rd on the list with \$319,496
- Carl Yuan • Ex-UW • 117th on the list with \$27,926
- R.J. Manke • Tacoma • 7th on the list with \$241,737
- Aaron Wise • Ex-Oregon • No events

Champions Tour

- Ben Crane • Portland • 16th on the list with \$448,781
- Fred Couples • Seattle • 58th on the list with \$95,810
- Kirk Triplett • Pullman • 59th on the list with \$92,924

LPGA Tour

- Jing Yan • Ex-UW • 44th on the list with \$252,308
- Gigi Stoll • Tigard • 164th on the list with \$8,196
- Carolyn Inglis • Eugene • No events

LPGA Epon Tour

- Kathleen Scavo • Eugene • 145th on the list with \$672
- Sarah Rhee • Ex-UW • No events

Did you know....

• New Zealand caddie Steve Williams – who was on Tiger Woods' bag for 13 of his 15 major championships – based himself at Oregon's Sunriver Resort during the golf season and became involved with its men's club as well as with local fundraisers. An avid dirt-track car racer, Williams satisfied that hobby at Madras Speedway, some 60 miles north of Sunriver.



• When Tacoma Country and Golf Club was founded in 1894, its initiation fee was \$2.50, with monthly fees of 25 cents. Adjusted for 132 years of inflation as of June 2026, those figures equal approximately \$97 and \$10, respectively. Having remained in operation for 132 years and counting, TCGC is the oldest continuously operating club in Washington.



CELEBRATING 100 YEARS OF COMMUNITY & PLAY



14015 NE Glisan St.,
Portland, OR
97230
(503) 253-7507



GLENDOVEER
1926 Golf • Tennis 2026
www.PlayGlendoveer.com

- Two 18-Hole Courses
- 4 Indoor Tennis Courts
- Driving Range Powered By Toptracer
- Full Disc Golf & Footgolf Courses

Golf Tennis Disc Golf Footgolf

Northwest professionals qualify for the PGA Championship; It's time to get those juniors signed up for Drive, Chip & Putt

The Pacific Northwest was well represented at the recent PGA Professional Championship held at Bandon Dunes Resort.

This annual tournament brings together over 300 of the top club professionals from around the country with the top 20 earning a spot in the PGA Championship, one of the PGA Tour's major events.

And this year three of those 20 came from the NW.

Austin Hurt, the head professional at Winged Point Country Club on Bainbridge Island, led the tournament through three rounds before finishing in a tie for fourth. Bryce Fisher of Arrowhead Golf Club in Molalla, Ore. finished tied for 10th while Derek Berg of the PNW Golf Academy in Issaquah, Wash, also tied for 10th.

These three earned spots at the PGA Championship which was played in May at Aronimink Golf Club in Newtown Square, Penn. Unfortunately all three missed the cut to play over the weekend.

Sabrina Bonanno of Sahalee Country Club made the cut but finished outside the top 20. Three other players from the Northwest made the field and missed the cut in Liam Kendregan of Broadmoor in Seattle, Jason Aichele of Meadow Springs in Tri Cities and Kyle Kelly of Spokane.

Jesse Droemer of Texas won the tournament with a 283 total. Hurt finished three shots back after shooting rounds of 64-71-77 in his opening three rounds.



Pacific Northwest professionals Austin Hurt (left) and Derek Berg qualified for the PGA Championship.

In April, a pace of play bonus will be implemented during the 2026 Drive, Chip and Putt National Finals at Augusta National Golf Club. Under the new policy, National Finalists will earn up to three additional points if they complete each shot during the competition in 40 seconds or less. This initiative aims to reinforce pace of play as an essential skill in golf. Further details about the National Finals policy are available within the National Finals scoring section on the rules and regulations page of the website (here).

Local qualifying for the 13th season begins May 2 at 353 sites nationwide and will continue throughout the summer. Participants are grouped in separate girls' and boys' divisions in four age categories, with scoring centered around skill performance in driving, chipping and putting.

Top performers at the local level will advance through subregional and regional qualifiers in July/August and September/October, respectively. This

season's 10 regional hosts feature several USGA and PGA Championship sites, including TPC Sawgrass, Whistling Straits, Pinehurst Resort & Country Club, Castle Pines Golf Club, Southern Hills Country Club, Crooked Stick Golf Club, Pebble Beach Golf Links, The Los Angeles Country Club, Laurel Valley Golf Club and Quaker Ridge Golf Club.

From these qualifiers, 80 finalists – 40 boys and 40 girls – will earn an invitation to compete in the Drive, Chip and Putt National Finals at Augusta National Golf Club on Sunday, April 4, the eve of the 2027 Masters Tournament. Qualifiers are facilitated by all 41 Sections of the PGA of America across the country. Online registration makes it easy for parents to sign up their junior golfer and find a local qualifier near them.

Northwest Women's Open June 22-24

The 2026 Northwest Women's Open Presented by

PNW Equipment is set for June 22-24 at Twin Lakes Golf and Country Club in Federal Way, Wash.

The two-day event is open to professionals and amateurs. The opening day on June 22 features a Pro-Am while the tournament proper will take place June 23-24.

For more information see the web site www.northwestwomensopen.com.

How to get a GHIN handicap

If you are looking to get a golf handicap for the 2026 season it is nice and easy with any of your local golf organizations..

1) Sign up for a Handicap ID.

Your unique Handicap ID number gives you the ability to post scores from which your Handicap Index is calculated. Get your Handicap ID number when you join a WA Golf member club such as the men's or women's club at a local golf course, or one at your workplace or community. Or join the Oregon Golf Association (OGA).

Join a WA Golf Associate Club or OGA club. Associate members receive all the benefits of a WA Golf membership with no strings attached or obligations to their host club.

2) Start posting your scores.

With your Handicap ID number you can post your scores: Through the USGA GHIN app on your mobile device. The app lets you post your scores, calculate course handicap, view score history and more. The app features touch-point GPS for thousands of golf courses worldwide. Download the free app from the App Store or Google Play.

Here are a couple of ways to get it going: Through ghin.com or Online at wagolf.org/post. Scores should be posted as soon as possible after your round on the day it was played.

3) Post three 18-hole rounds.

Entries open for Drive, Chip & Putt

The USGA, Masters Tournament and PGA of America have announced that registration for 2026-2027 Drive, Chip and Putt qualifying is now open at DriveChipandPutt.com. This year will mark Drive, Chip and Putt's 13th season of qualifying events for boys and girls ages 7-15. The free program, which can be accessed in all 50 states, aims to provide a welcoming environment for youth to participate in golf and focus on the game's three fundamental skills.

Large natural fir trees line the fairways creating a dramatic and challenging golf experience that rewards the accurate shot maker. One of the rare golf courses that allow for a test of golf at every skill level. Lake Wilderness Golf Course is a fun and enjoyable round of golf in an amazing resort-like setting.

MONDAY/TUESDAY
(valid anytime)
and SUNDAYS after 12PM

\$40

Includes Cart Fee
and a sleeve of Srixon
Soft Feel Golf Balls

Must present coupon to receive special pricing
Not valid with leagues or tournaments
Expires 6/30/2026

2026 ADVANTAGE MEMBERSHIP

SAVE BIG!
EVERY TIME
YOU PLAY!

FREE ROUND OF GOLF WITH PURCHASE!

Regular		M-F: \$36		S-S: \$46
Seniors		M-F: \$36		S-S: \$43

1/2 CART FEE INCLUDED. TAX NOT INCLUDED

only

\$139

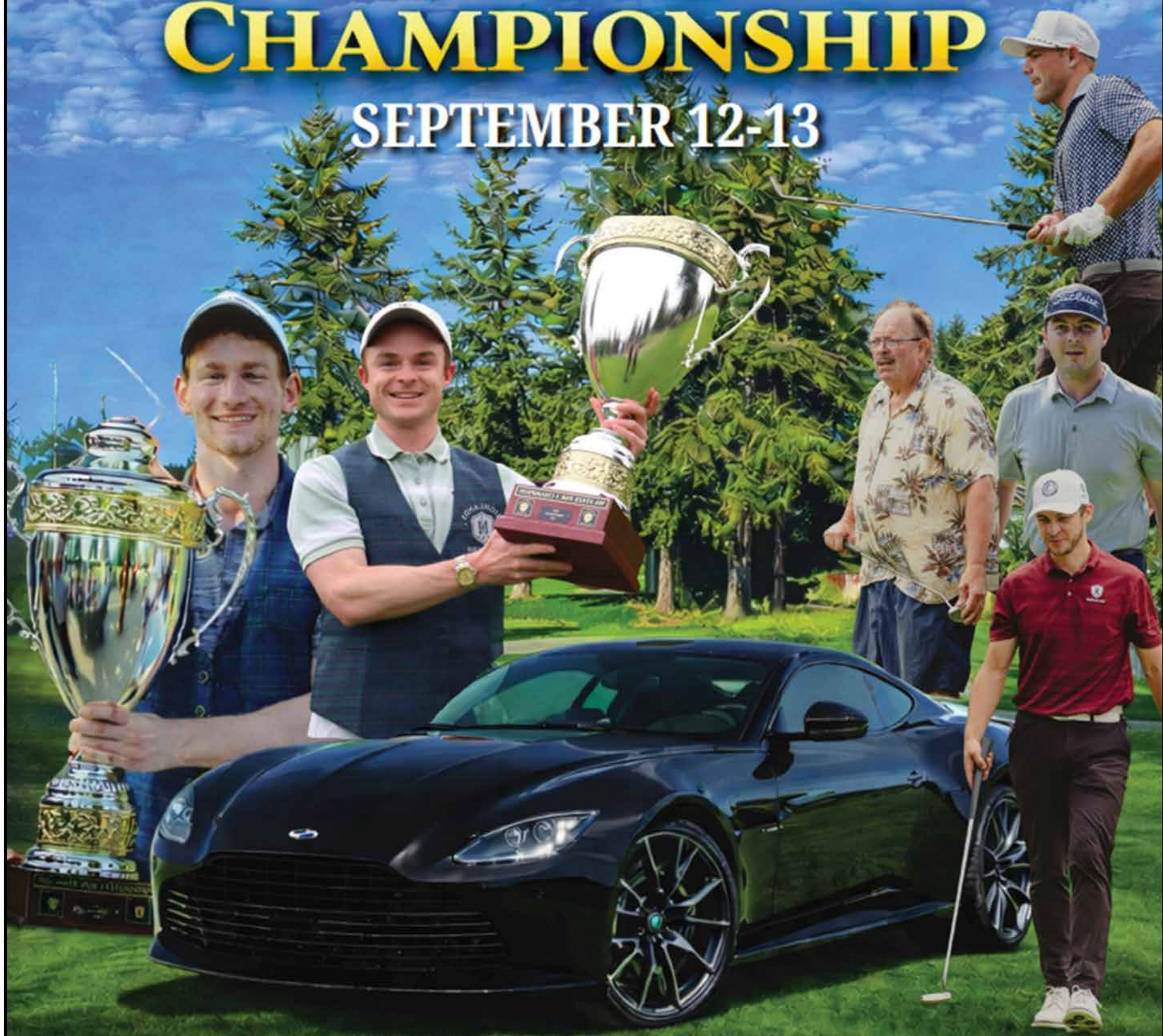
RENEWALS \$134

Lake Wilderness Golf Course

25400 Witte Road S.E., Maple Valley, WA 98038 | (425) 432-9405 | www.lakewildernessgc.com

2026
WASHINGTON STATE
PAR 3
CHAMPIONSHIP

SEPTEMBER 12-13



HIGHLANDS GOLF COURSE
TACOMA, WASHINGTON

Rules of the Game: You might not like your choices when it comes to an embedded ball but you do have some choices

Last month I noted this month's article would cover options for a ball embedded in a penalty area or in a bunker. Most players won't like any of the available options, however you need to know what the options are if this ever happens to you.

Penalty Area options first; You can play that ball as it lies, or you can take penalty area relief. That's it. Unplayable ball relief IS NOT allowed for a ball at rest in a Penalty Area. You can take any of your relief options under Rule 17.1 or take a stroke at it. Hopefully the ball leaves the penalty area. If it doesn't, well that is another Rule (17.2) which I will cover in a future issue.

There are a couple of relief options for a ball embedded in sand in a Bunker. Or, if a player doesn't want relief, the ball can be played as it lies. None of the relief options are free relief. Here are a couple of scenarios involving Rory, Bubba, Phil, and DJ. Each of them has hit their approach shots from the general area and they all ended up with a ball embedded in a green side bunker. Rory decides to take unplayable ball relief for one stroke using the back on the line option, dropping his ball inside the bunker for one penalty stroke.

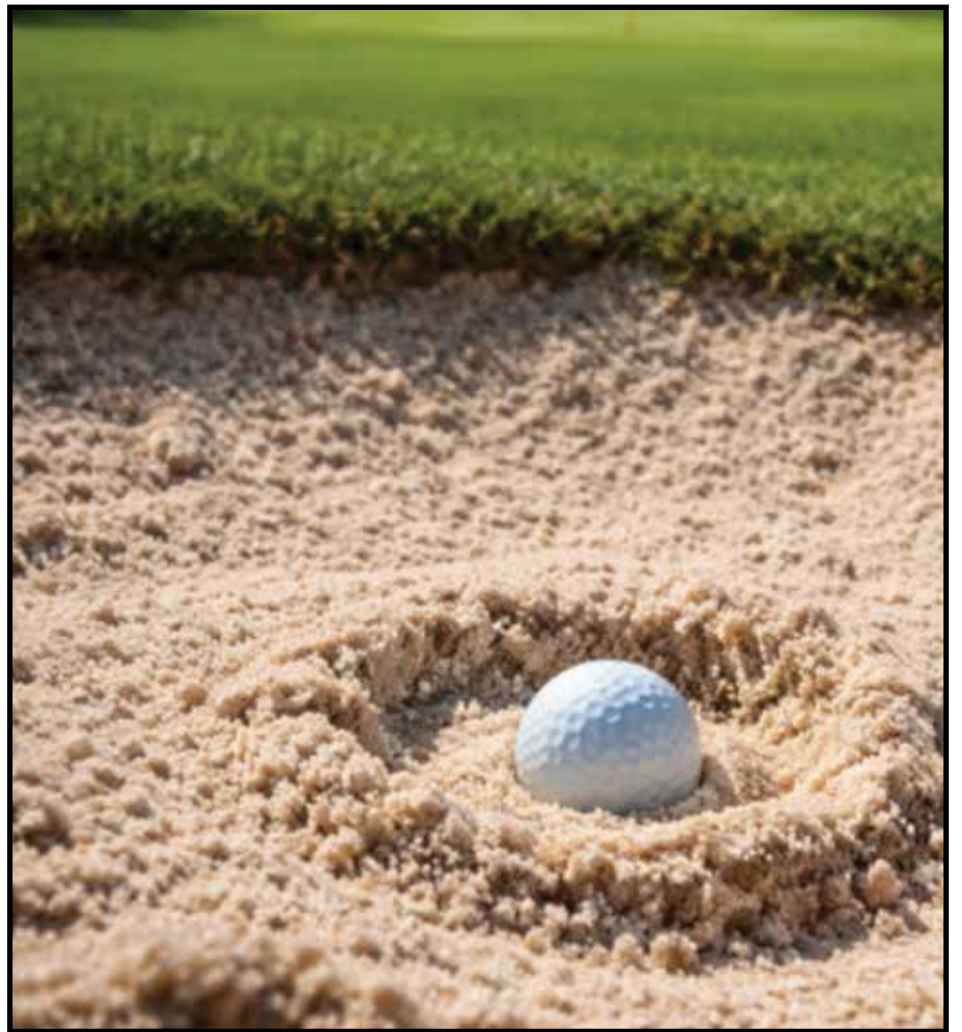
Bubba's ball is embedded in sand on a steep slope inside the bunker. He opts to take embedded ball relief using the lateral relief option. He understands his relief area must be in the bunker and he will be assessed one penalty stroke. Phil has the dreaded "fried egg" lie. Phil and DJ are debating whose lie is worse, as only a dime-sized portion of DJ's ball is visible because it is buried at the base of a steep sandy slope. DJ's ball is embedded where his stance is a one leg in, one leg



There are a couple of relief options for a ball embedded in sand in a Bunker. Or, if a player doesn't want relief, the ball can be played as it lies. None of the relief options are free relief.

out scenario. Neither Phil nor DJ want to try to make a shot from the sand.

Phil liked the distance that he had from where his previous stroke was made and chooses the unplayable ball relief option of stroke and distance. Phil will drop his ball in the general area where his previous stroke was made from outside the bunker for one penalty stroke. DJ does not want to go back to where his previous stroke was made (because he hit his shot from a terrible lie under a bush). DJ chooses to use Rule 19.3b—an extra relief option. DJ drops his ball OUTSIDE the bunker using back on the line relief for a total of two penalty strokes. Each scenario warranted a



You have options if you find one of your shots during your round becomes embedded anywhere on the course.

different choice for a relief option.

These are your relief options for embedded ball in a Penalty Area or Bunker—just keep

in mind none of them are without penalty.

However, you can always play your ball as it lies for that shot.

NILE SHRINE GOLF COURSE
& #19 BAR & GRILL IN MOUNTLAKE TERRACE

18 HOLES OPEN TO THE PUBLIC
 Exit #177 off I-5, West 1/4 mile on the right

Book your tee time today at
www.nileshriners.org

Check out our website for more coupons!

TEE TIMES: 425-776-5154

Discovery Bay Golf Club
2 Players \$59
 Two Golfers, 18 holes walking

Dog-Friendly Golf Course

18 Holes of Challenging Golf & Practice Range

Check out our website for specials

MUST PRESENT THIS COUPON

Offer good through June, 2026
 Good all day 7 days a week.

360-385-0704
 7401 Cape George Road, Port Townsend, Wash.
www.DiscoveryBayGolfCourse.com

FABULOUS PRIZES & CONTESTS!

PRESENTS
Lynnwood Par 4 Parks GOLF TOURNAMENT
CADDYSHACK
 Proceeds to benefit the Lynnwood Chamber & Lynnwood Parks + Recreation Foundation

WIN A MILLION DOLLAR HOLE IN ONE

WIN \$100,000 HOLE IN ONE

Be the ball. Be the ball. Be the ball.

Be the Player! Be the Sponsor!

PLUS Swag/Treats/Contest/or Prizes at EVERY SPONSORED HOLE!
 So you'll have that going for you, which is nice.

For Additional Information

Or To Register, Scan This Code

JULY 17TH 2026

Lynnwood Golf Course
 20200 68th Ave W
 Lynnwood, WA 98036

A full day of fun and competition



BOEING CLASSIC

EXPERIENCE THE PGA TOUR
CHAMPIONS LIVE

AUG 14-16, 2026
THE CLUB AT SNOQUALMIE RIDGE



Fred Couples



Ernie Els



Zach Johnson

The **Boeing Classic** welcomes the world's greatest golf legends to the Pacific Northwest! Join Masters Tournament champions and Golf Hall of Famers at The Club at Snoqualmie Ridge as they compete for a \$2.3 million prize purse. In addition to world-class golf, airplane flyovers, and breathtaking views, check out the Seahawks Village for legacy player autographs, a putting green challenge, crafts for kids, and much more.

Tickets are just \$20 - and kids get in free!

FAMILY FUN | AFFORDABLE TICKETS | EASY PARKING



Virginia Mason
Franciscan Health



CHAMPIONS



charles
SCHWAB

Peninsula Golf Club: Course on Washington's Olympic Peninsula turns 100 years old in 2026

Peninsula Golf Club truly qualifies as a hidden gem. Sitting between the Olympic Mountains and the Strait of Juan de Fuca, just outside of downtown Port Angeles. The course is celebrating its Centennial this year and has scheduled a three-day event in July.

A couple of years ago, this private course, opened its doors to welcome public play for the first time.

Now with the public welcome, it is time to shine the spotlight on this jewel of a course.

It first opened in 1926 with nine holes, then added a second nine in 1978. There is a scorecard on the wall in the clubhouse where the legendary Byron Nelson shot a 66 in 1945. That was the year that included a historic streak where Nelson won 11 consecutive tournaments, a record that has never been surpassed. He played with "Jug" McSpaden who shot a 67.

The course is not long by today's standards, playing to 6,332 yards, however, shooting a low number is not as easy as it may seem as golfers have to be able to navigate some tall trees, that can encroach on fairways, be able to play on sloping fairways, sometimes leaning toward OB and hit precise approach shots to smallish greens.

There are also a couple dozen bunkers to dodge. The wind blowing in off the strait can be a factor too. This is old-school-golf at its best.

The course has a covered driving range and a full-service restaurant and bar open to all.

It is best to play Peninsula Golf Club on a sunny day so you can soak in the spectacular views; on one side is the towering Olympic Mountains and on the other, a view of the Strait of Juan de Fuca with Vancouver Island sitting about 20 miles away. The course is 15 miles west of Sequim with a four-lane highway connecting the two cities.



Peninsula Golf Club in Port Angeles is celebrating its 100th anniversary during the 2026 season.

Pacific Coast Golf Association picks executive director

The Pacific Coast Golf Association (PCGA) has announced the designation of Nate Schroeder as its next executive director, taking over the position previously held by Troy Andrew. The change – made with approval from the PCGA Executive Committee – comes with immediate effect and Schroeder will preside over the 59th Pacific Coast Amateur Championship, set for July 21-24, 2026, at Poppy Ridge Golf Course in Livermore, Calif.

Washington Golf (WA Golf) will continue to be the managing association of the PCGA and remain responsible for administration and supportive services.

Schroeder brings a wealth of championship operations experience to the PCGA. He is the senior director of championships and golf operations for both WA Golf and the Pacific Northwest Golf Association (PNGA).

Vandal Course to host juniors

Vandal Golf Course in Moscow, Idaho – home course of the University of Idaho – will serve as the venue for the 2026 PNGA Junior Boys' and Girls' Amateur championships, to be held concurrently from Aug. 10-14. This will mark the third time the course has hosted the boys' championship (2001, 2009) and the first time it will have hosted the girls' event.

The course, formerly known as the University of Idaho Golf Course, has been open since 1936 and has a long history of hosting several state and regional championships, such as the 2019 Idaho Junior Amateur. Designed by Francis L. James, Vandal GC is situated in the rolling hills of the Palouse region of western Idaho, providing its challengers with scenic views as they navigate the layout of roughly 6,700 yards.



LakeLand Village

Playing at two LakeLand Village Golf Courses offers golfers numerous ponds, gaping bunkers and majestic views of the Olympics and Mount Rainier. Ardent golfers will appreciate the scenic driving ranges, practice chipping and bunker areas, and the well-groomed putting greens. In addition to a gourmet restaurant, cafe and espresso bar, the clubhouse also provides banquet facilities.



Two Golf Courses: Executive Nine and The 18-hole Championship Ranch Course

Lifestyle

LakeLand Village Community

The community at LakeLand Village is like no other. The vibrant housing community is the only Washington residential community that offers 27 holes of golf.

The residents at LakeLand enjoy a variety of niceties like a lake-front bistro restaurant, a stocked spring-fed 50-acre lake for year round fishing, several miles of quiet streets for walking or bike riding and of course some of the best golf found in the state.

Located between Hood Canal and Puget Sound's Case Inlet, overlooking the town of Allyn, LakeLand Village offers a relaxed lifestyle for a unique living experience.

"With the same great owners, the golf course is under new management that has brought so many great changes to the course and an abundance of hospitality."

Clubhouse and The Bistro



50-acre Lake Anderson



Real Estate

NEW Housing Opportunities:
An 82 unit housing development is being added on The Ranch Course.



If you would like to make a tee time over the phone or if you have any questions please call the Pro Shop at 360-275-6100.
Website: lakelandvillagegc.com/

LakeLand Village

200 E Old Ranch Rd. • Allyn, WA 98524



**UNLIMITED ADVENTURES.
ONE UNFORGETTABLE PLACE.**



BAR | RUN

**BOOK YOUR ADVENTURE
AT BARRUNGOLF.COM**

(541) 492-0000 | 620 Shady Dr, Roseburg, OR 97471 info@barrungolf.com

Destination: Bar Run

New golf course in Southern Oregon offers a little bit of everything off and on the course

Bar Run Golf & RV Resort might just be one of the best-kept secrets in the Pacific Northwest.

Set about three hours south of Portland in Roseburg, Oregon, Bar Run has offered a little something for everyone since opening in 2022. Championship golf? Check. RV accommodations? Check. Cottage stays along the course? Check. A resort-style pool, lazy river, and more? Check and double check.

Built on a reclaimed sand-and-gravel mine along the South Umpqua River, Bar Run's 6,215-yard, par-70 championship course showcases the creativity of acclaimed Pacific Northwest architect Dan Hixson. Signature touches abound, including a hand-carved concrete wall on the 6th hole inspired by North Berwick's famed "Pit," and a trestle bridge on the 9th that pays homage to Augusta National's Hogan Bridge.

Hixson leaned into the natural landscape at every turn. With the river shaping several holes and the nearby Callahan Mountains framing the property, water and scenery play central roles in both strategy and experience.

The course has not gone unnoticed. Sports Illustrated included Bar Run among the "Best Renovations, Restorations, and New Golf Courses from 2022," while Golf.com ranked it among the Best Golf Courses in Oregon for 2024-25.

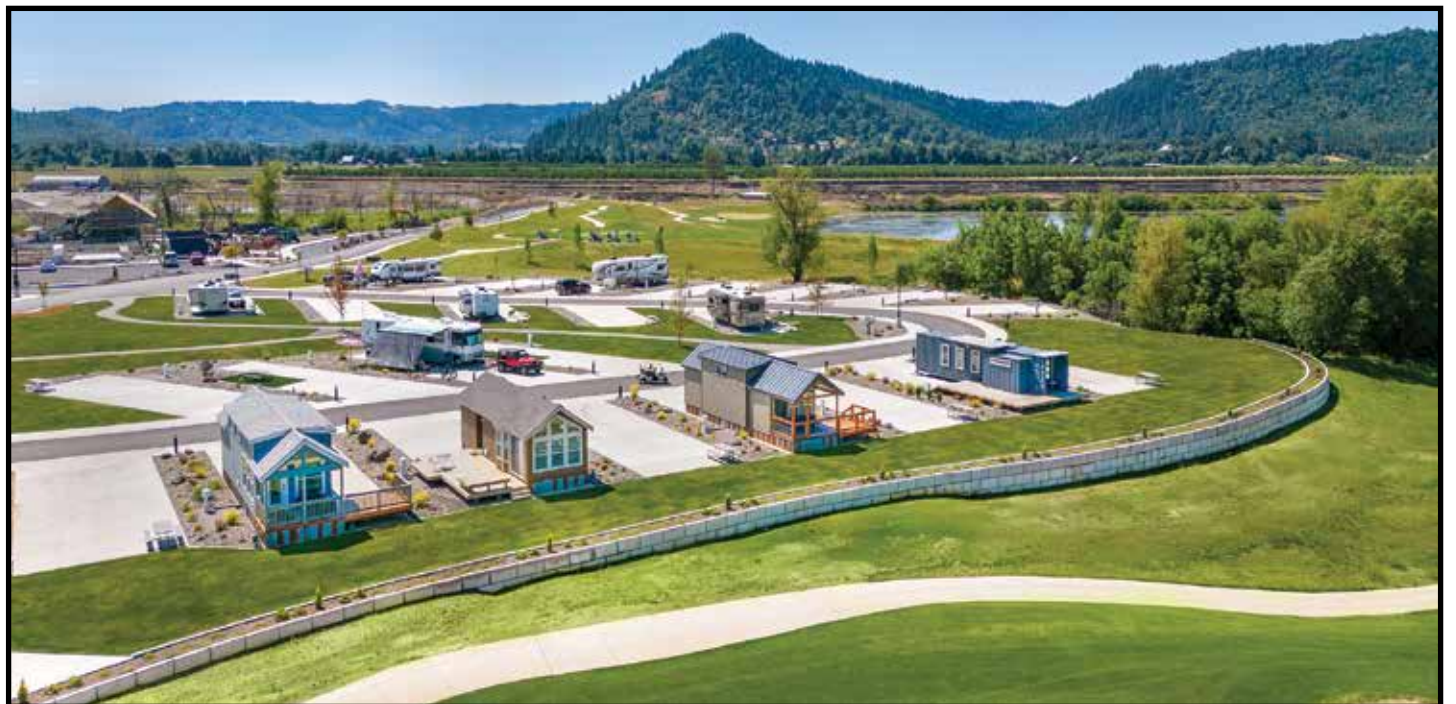
Yet golf is only part of the story.

What sets Bar Run apart is its broad appeal. The year-round resort welcomes golfers, families, and RV travelers alike. The RV park features 66 full-service sites, while six on-site cottages provide additional comfort. At the heart

of the resort, a pool complex with a lazy river and hot tub offers a gathering place for guests of all ages. For a more relaxed vantage point, The Nest overlooks both the pool and course, making it an ideal spot to unwind.

Beyond the property, guests have easy access to downtown Roseburg, nearby wineries, and abundant outdoor recreation.

In short, Bar Run is designed to be enjoyed by all — even those who are just discovering it.



Bar Run is a spectacular vacation destination with its swimming pool complex and the lazy river (top) and with cottages along the championship golf course (bottom).

100 YEARS
1926 2026
PENINSULA
Golf Club

1926 - 2026

COME CELEBRATE WITH US

A 3-DAY RETRO CELEBRATION

JULY } - FRIDAY 24TH - SATURDAY 25TH - SUNDAY 26TH

Friday and Sunday will be Open Play
- Green Fees only \$19.20,

Saturday will be a Scramble Tournament followed by a day of celebration with a live band and other retro events.
The Saturday tournament will be a shotgun start and will only cost \$38.52 for golf and lunch.
(Sign up early as the field is expected to fill quickly)

824 S Lindberg Rd.
Port Angeles, WA 98362

peninsulagolfclub@gmail.com

Pro Shop
Book A Tee Time
360.457.6501

The Lesson Tee: Try and get the most out of that ‘offensive weapon’ in your golf bag – the driver

I feel so fortunate to have spent my life in this amazing game of golf. High school, college and playing The PGA and Champions Tour.

Another amazing privilege has been to teach golfers from around the Pacific Northwest and beyond at my golf academy at Semiahmoo for close to 26 years. I keep saying, “They’re gonna make a teacher outta me yet!”

This issue I’d like to share some helpful information on our “offensive weapon” in our golf bag. The Driver! Golf is much more fun and easier when we drive the golf ball well.

Most golfers swing the driver on to steep an angle of approach to the golf ball.

Most golfers would have more success with the driver (and all clubs) with a stronger grip.

Most golfers have shafts too stiff and too long.

Most golfers need more loft on their driver.

Students come to me at Semiahmoo from hours away to score better, learn proper technique, think effectively and hit their driver better. Among other things. If my life depended on clients hitting their driver more consistently and further, they would practice in this Swing Station. Constantly. (See Photo 1).

Like Ping Pong and Tennis a shallow angle of approach is a speed producing angle and spin. A steep angle or cutting across the plane approach is a speed reducing angle of approach to the ball. Not my opinion, but Physics. Most golfers will need to make their backswing lower, deeper, swinging more around their spine than in a straight line and up. (Photo 2-3). This will enhance the angle of approach to the golf ball.

Jeff Coston is a member of the Pacific Northwest PGA Hall of Fame and Golf Digest #1 Teacher in Washington. Jeff can be reached for appointment by calling Semiahmoo at 360 201-4590. See jeffcoston.com for more.



Jeff Coston

Like Ping Pong and Tennis a shallow angle of approach is a speed producing angle and spin. A steep angle or cutting across the plane approach is a speed reducing angle of approach to the ball. Not my opinion, but Physics.



Photo #2



Photo #1



Photo #3

LEARN TO PLAY FROM A PRO

WHO PLAYED FOR A LIVING

CHAMPIONS TOUR PROFESSIONAL



Inducted into the PNW PGA Hall of Fame

...

26-time PNW PGA Player of the Year

All time Major Tournament Winner in NW golf history

“Jeff Coston is one of the most talented golfers I’ve ever played with. Beyond that, he’s one of the nicest guys I know.”
Tom Lehman...
206 Ryder Cup Captain & 1997 Leading Money Winner and Player of the Year

Jeff COSTON
Golf Academy

360-201-4590

www.jeffcoston.com

Lake Chelan Golf Course

Rentals Available
Full Service Restaurant
For Tee Times Call 800-246-5361

www.LakeChelanGolf.com

Mill Creek Country Club

Mill Creek County Club-Director of Instruction

JUNIOR PROGRAMS

To FIND OUR PROGRAMS search:
PGA JR League – Mill Creek CC
Operation 36 – Mill Creek CC
Girls Golf – Mill Creek CC

Val Patrick, LPGA Professional
 Email: val6870@gmail.com
 Mobile: 206-276-6870

Northwest Women’s Open

June 22nd-24th, 2026
 Twin Lakes Golf and Country Club
 Federal Way, Washington

WOMEN PROFESSIONALS & AMATEURS ARE INVITED TO THIS ANNUAL EVENT!!!

June 22: PNW Equipment Women’s Open Pro-Am
 June 23 : First round PNW Equipment Women’s Open
 June 24: Second round PNW Equipment Women’s Open

Sponsored by:

For more information call:
425.273.4948



100 DAY
SATISFACTION
GUARANTEE
Shop with confidence!

COME GET FIT!

Scan to schedule your
fitting appointment



GIVE DAD THE GIFT OF GOLF

Everything you need to make his day unforgettable.

DOORBUSTER DEAL



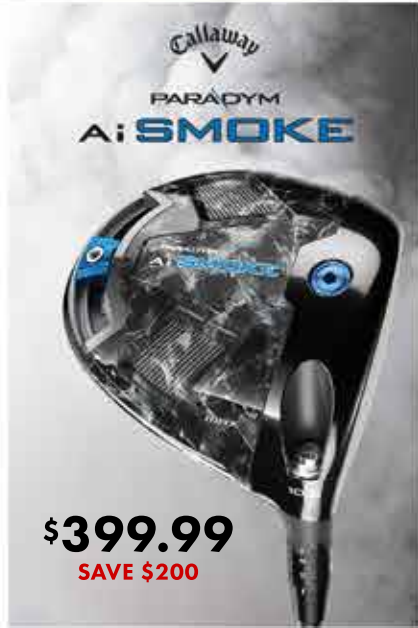
MGi
Sureshot Pinloc 6000iM
Golf Laser Rangefinder
\$99.99
SAVE \$130



\$299.99
SAVE \$250



\$349.99
SAVE \$180



\$399.99
SAVE \$200



NEW FOR 2026
DISTANCE YOURSELF
Titleist
GTS
PREORDER
Launch 6/11



STARTING AT \$499.99
SAVE UP TO \$400
Callaway
ROGUE ST
MAX IRONS



BUY 2 GET 1 FREE



TaylorMade
TP5 or TP5x
Prior Generation
\$44.99
SAVE \$18



FATHER'S DAY
SHOE BLOWOUT

GOING ON NOW



FootJoy Pro SLX
Previous Season Style
\$79.99
SAVE \$80



Puma
PhantomCat Nitro
\$69.99
SAVE \$110



Adidas S2G
Starting at
\$59.99



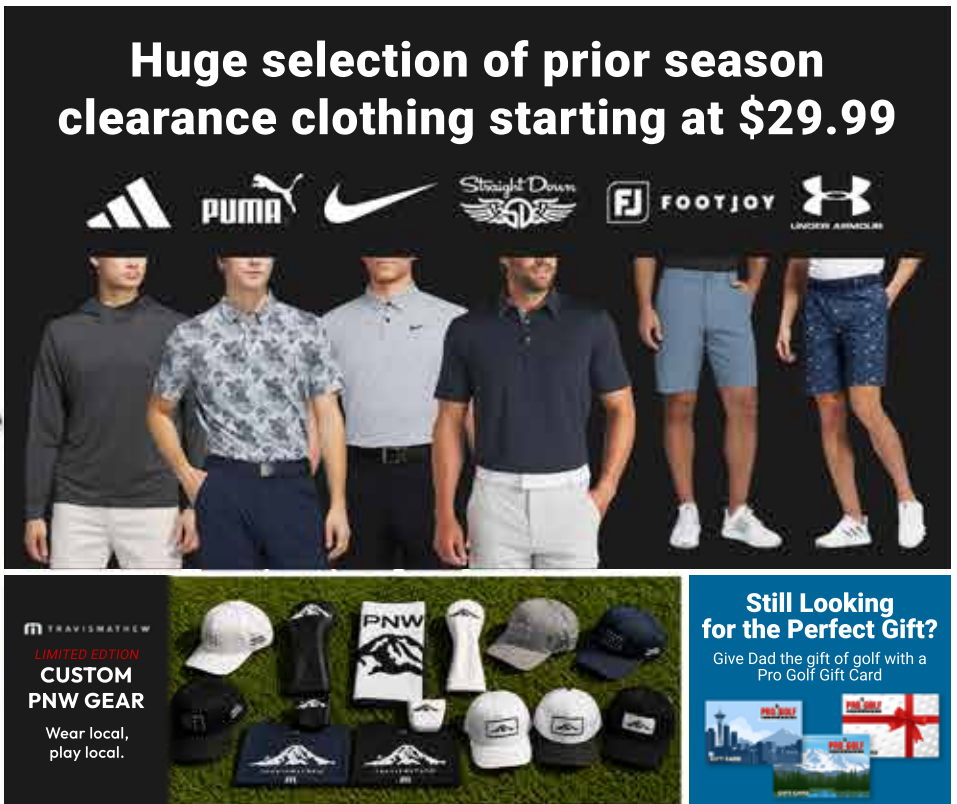
SUN MOUNTAIN
Weathermax
Golf Bags
Starting at
\$199.99
SAVE UP TO \$200

Titleist
Prior Generation
Players 4
Stand Bags
\$199.99
SAVE \$40



BagBoy
Nitron Auto-Open
Push Carts
\$299.99
SAVE \$20

BagBoy
Volt
Electric Carts
\$1395.99
SAVE \$100



Huge selection of prior season
clearance clothing starting at \$29.99



TRAVIS MATHEN
LIMITED EDITION
CUSTOM
PNW GEAR
Wear local,
play local.



Still Looking
for the Perfect Gift?
Give Dad the gift of golf with a
Pro Golf Gift Card